

VEGO Dynamic PS 30, PS 40



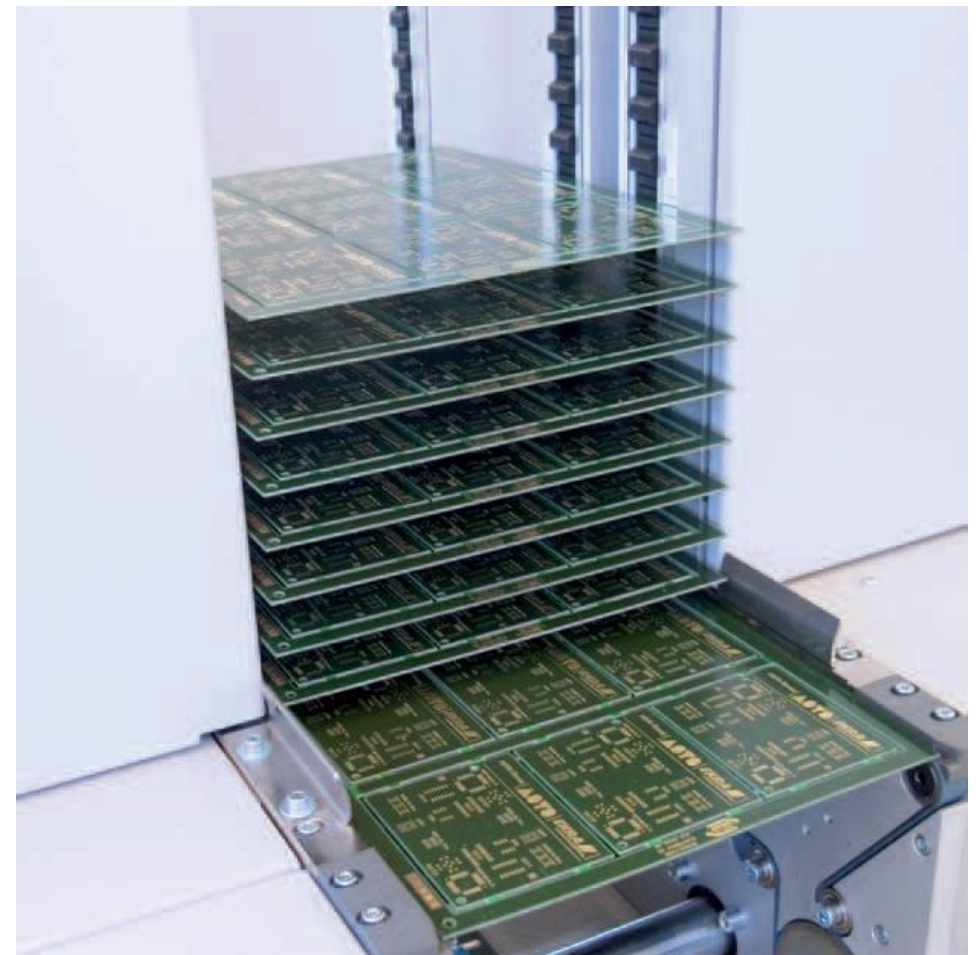
PS 30 Buffer

- › The buffer receives the PCB's from the incoming conveyor and stores them by utilize a vertically aligned toothed belt. On demand from the following unit the PCB's can be lowered back down onto the conveyor and transferred. The unit only works in a LIFO mode.



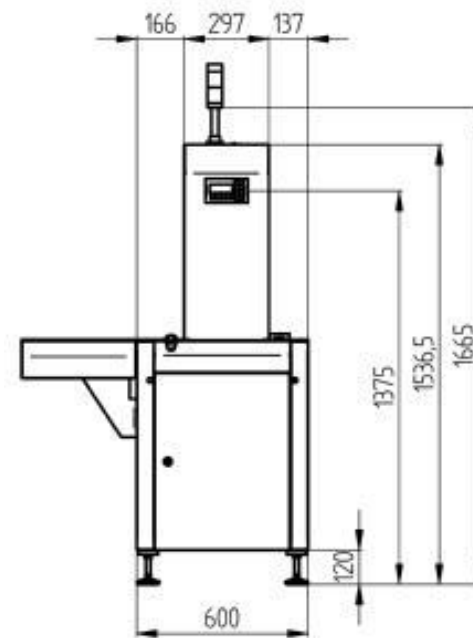
Operating mode

- › LIFO- buffer
- › Load- function
- › Unload- function
- › Pass-through mode

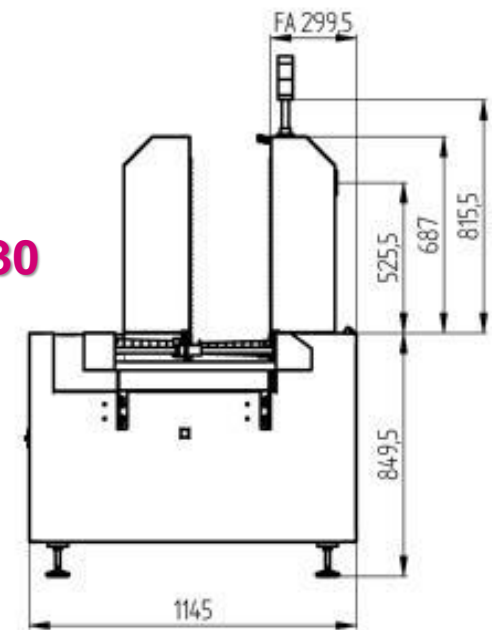


Technical Specification PS 30 / PS 40

| | |
|------------------|---|
| Length | 600 mm |
| Width | 1145 mm |
| Height | 1536 mm / 1737 mm |
| PCB width | 70 - 460 mm |
| PCB length | 50 - 460 mm |
| Transport height | 850 mm +/- 50 mm (950 mm +/- 50 mm option) |
| Cycle time | < 8 sec. |



PS 30



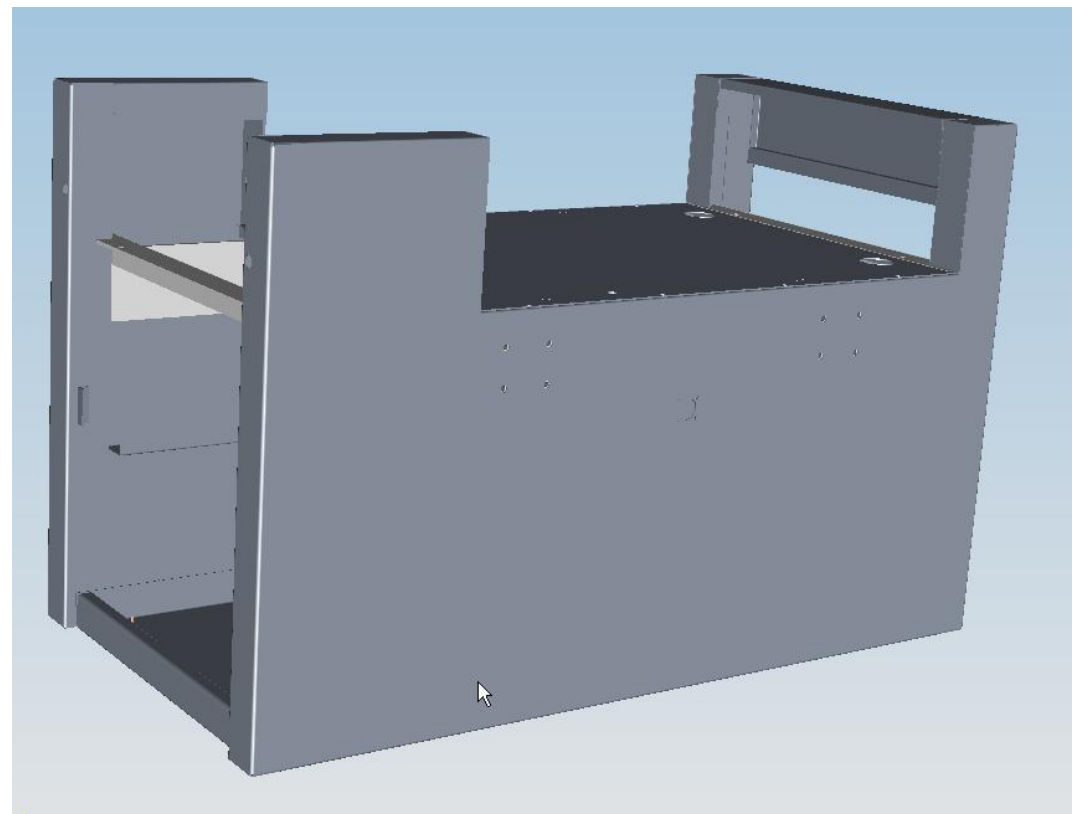
Operation

- › Operator panel with graphical color display
- › Setup of the machine during production
- › Password-protected user levels (configurable)
- › Product memory function



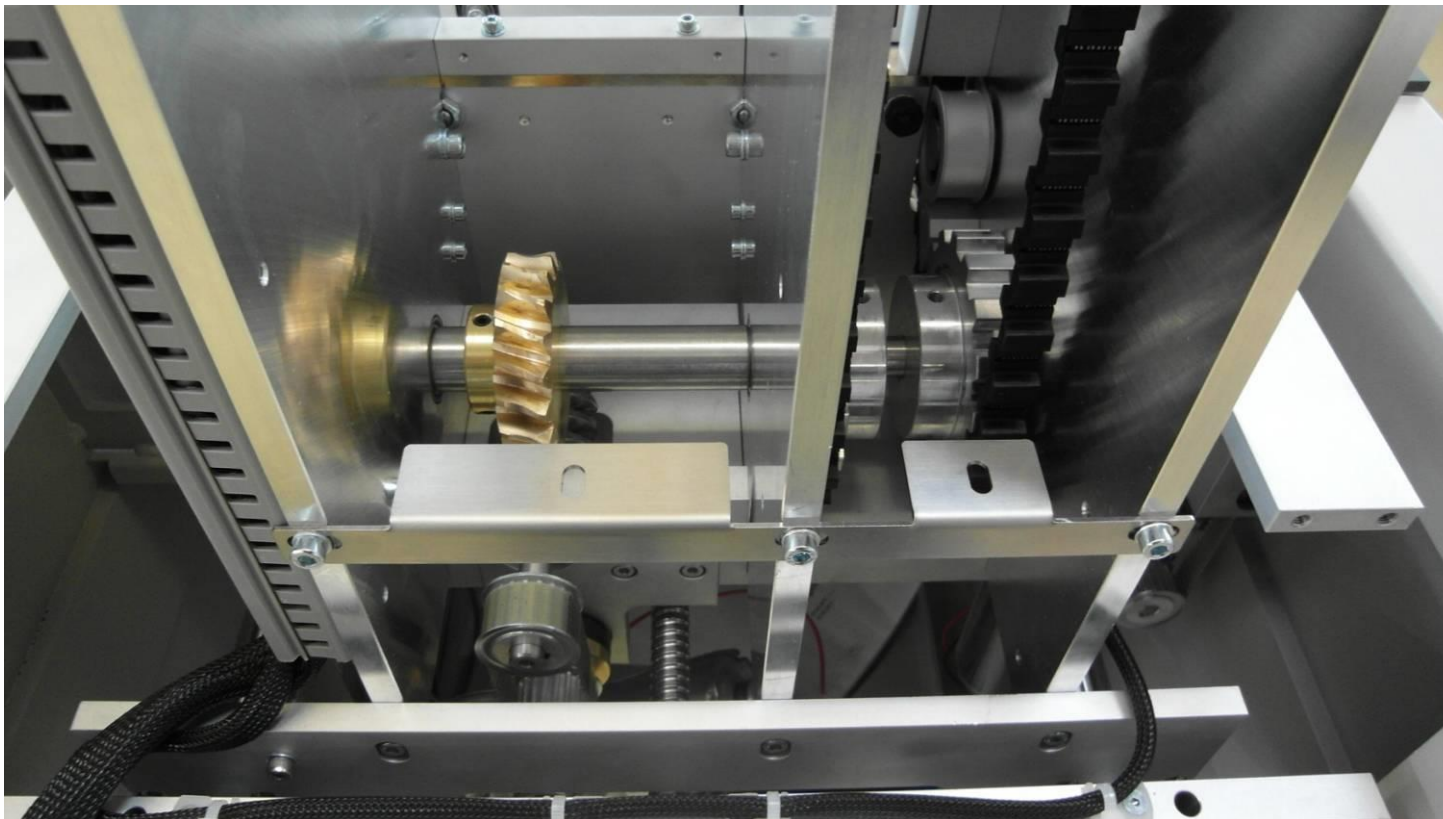
Frame

- › Robust steel tubing frame
- › Complete ESD powder coating



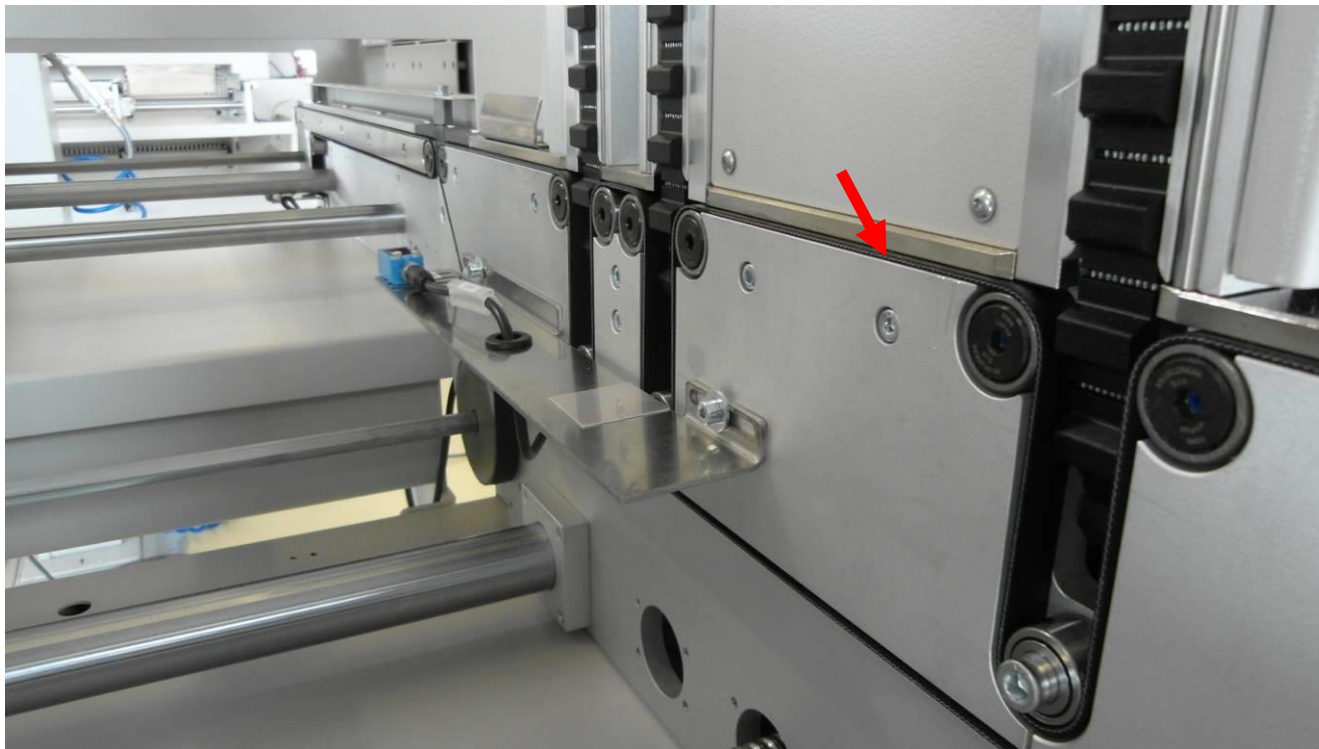
Mechanic

- › Mechanic built from anodized aluminium
- › High quality and long lasting mechanical components



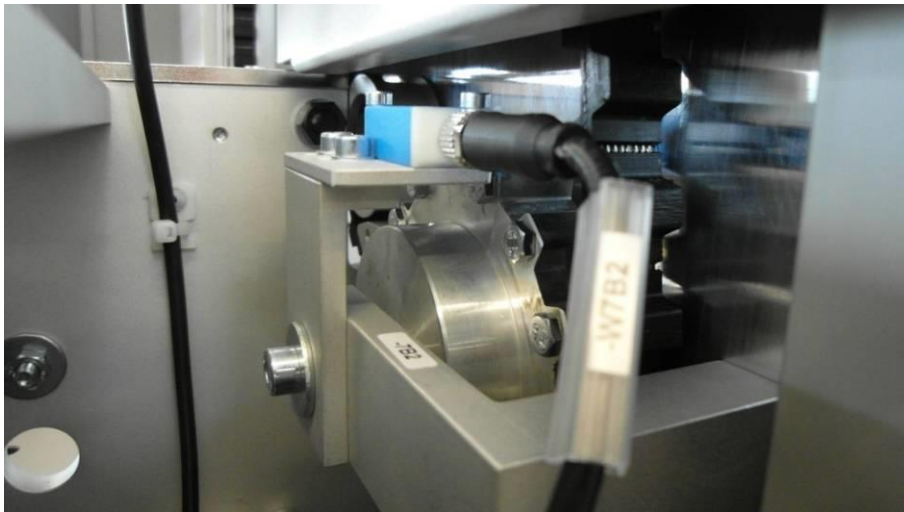
Conveyor

- › 24V DC- drive motor
- › ESD transport -belt



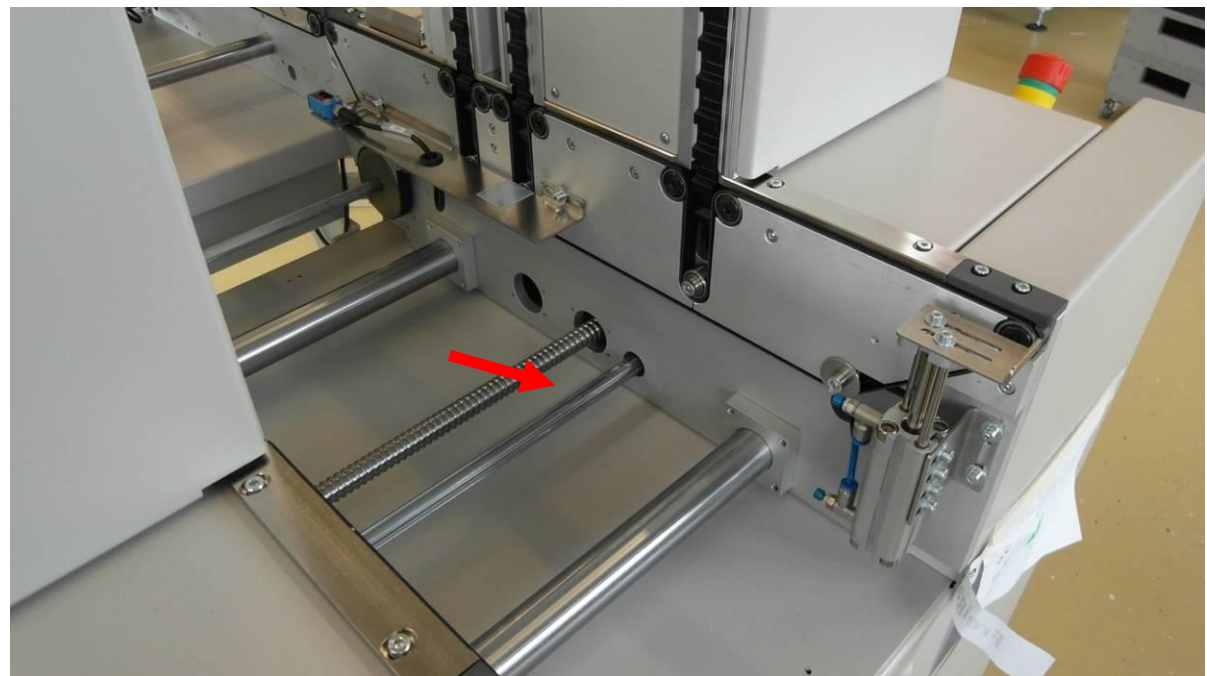
Buffer

- › 24V DC motor
- › ESD buffer belt
- › Buffer pitch adjustable via operating panel
- › Sensors for exact positioning
- › Adjustable pre-warning limit



Width adjustment

- › Width adjustment by electrically driven spindles (Standard feature)
- › Automatic width adjustment by setting absolute position at the operator panel (option)



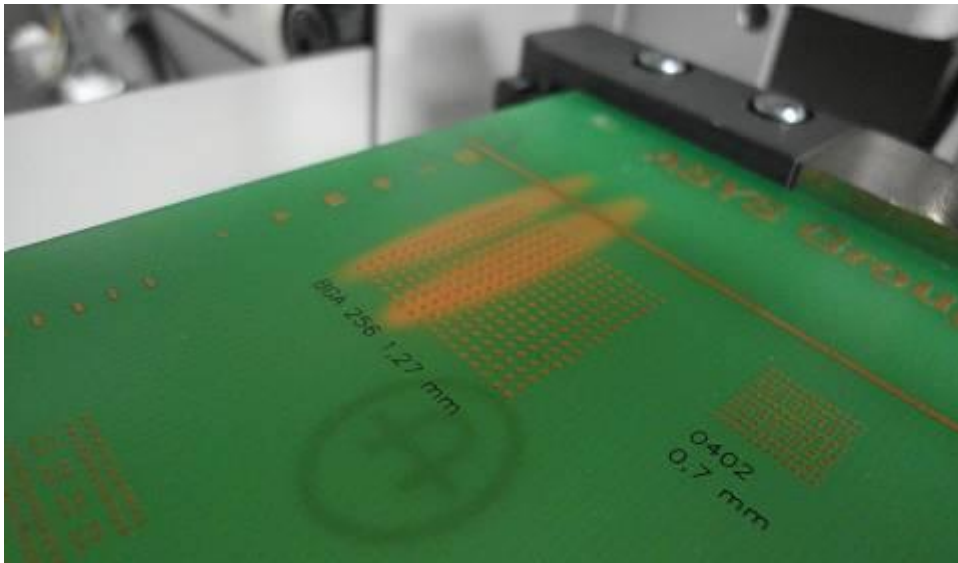
Electric

- › Control cabinet door with double-bit lock
- › Main switch can be used as emergency stop



Sensing

- › High quality, multi beam light sensors (in the buffer and in the inlet/outlet conveyors) for reliable recognition of PCBs with cut-outs
- › Ultrasonic sensor for the supervision of the buffer filling state



PCB sensor



Sensor for buffer fill level

Option: In –/outlet conveyer

- › In – and / or outlet -conveyor
- › cover with safety switch (option)



Option:

- › Good- / bad sorting
- › Cool function for active cooling of the assemblies
- › Controlling mode above operating panel adjustable

Control counter

| AUTOMATIK | |
|----------------|-----------|
| Administrator | |
| ASYS 001 | |
| Betriebsart | Kontrolle |
| Kontrolle alle | 1 |
| LP Zähler: | 0 |
| LP Durchsatz: | 0 |

PAR CYSTOP STOP Pg ▾

Cooling inlet- conv.



Cooling buffer



Options:

- › Dust cover over complete buffer
- › Repair conveyor for removing of NG PCB



Buffer with repair conveyor

Cover with door from the side

